



## MEMORANDUM

**TO:** The Commonwealth Transportation Board

**THROUGH:** Thelma Drake  
Agency Director

**FROM:** Corey Hill  
Chief of Public Transportation

**DATE:** February 17, 2010

**SUBJECT:** Monthly Statewide Transit Ridership Report

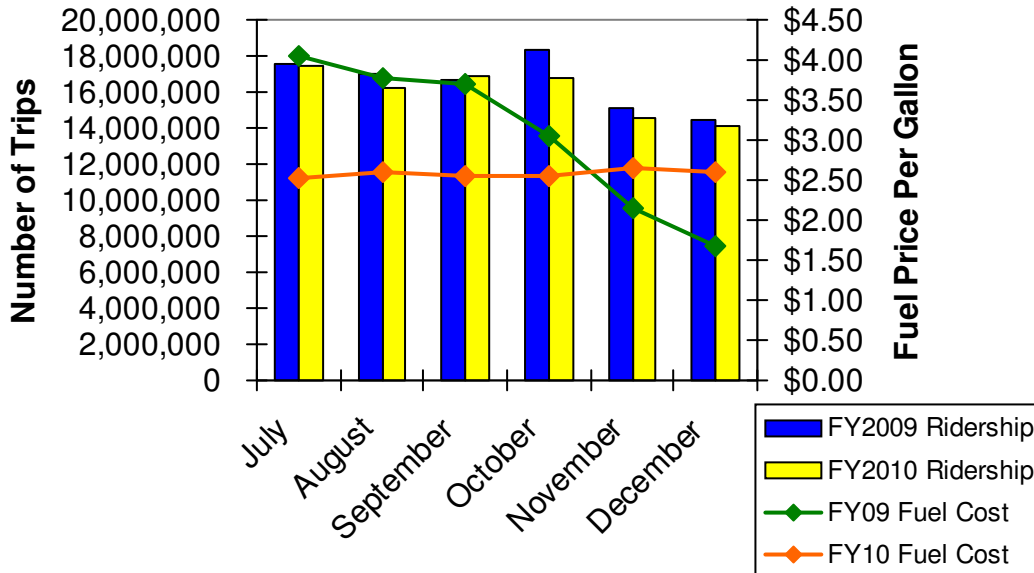
DRPT is pleased to present the monthly Statewide Transit Ridership Report, summarizing December 2009 transit, human service and commuter rail ridership data. This monthly report provides a snapshot of current performance and recent trends. DRPT continues to work with individual operators to refine data and ensure that all modes, including bus, commuter rail and specialized service for the elderly and disabled, are accurately reported, and to ensure that this monthly report is comprehensive.

The following key facts are based on a year-over-year comparison of monthly results reported by operators for December 2008 and December 2009.

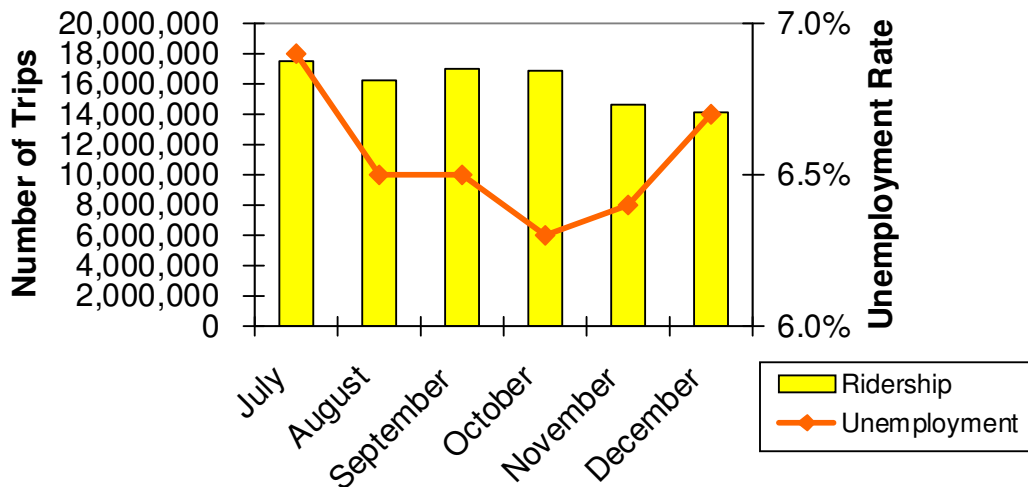
### Key Facts

- Year over year comparisons:
  - Virginia's unemployment rate increased by 31.4 percent to 6.7 percent in December 2009 as compared to the December 2008 rate of 5.1 percent.
  - The price of fuel per gallon increased 54.8 percent to \$2.60 per gallon in December 2009, as compared to the December 2008 price of \$1.68 per gallon.
  - Virginia statewide transit ridership for the month of December 2009 decreased by two percent, or 243,882 trips as compared to December 2008, based on reports from all 59 transit operators, 51 (of 55) human service operators, and the one commuter rail operator.
  - Fiscal year-to-date 2009 statewide transit ridership decreased three percent in FY2010 as compared to FY2009.
  - December 2009 included two additional weekdays and the same number of weekend days as compared to December 2008.
- Transportation district comparisons:
  - In transit ridership, the **Northern Virginia District** accounts for the majority at 75.9 percent in December 2009, followed by the Hampton Roads District at 10.4 percent and the Richmond District at 6.1 percent.
  - In human service ridership, the **Staunton District** accounts for the majority at 22.6 percent in December 2009, followed by the Hampton Roads District at 20.9 percent and the Fredericksburg District at 14.3 percent.
  - The district with the greatest increase in transit and human service ridership combined for December 2009, as compared to December 2008, is the **Lynchburg District** at 19 percent, or 38,473 additional trips.

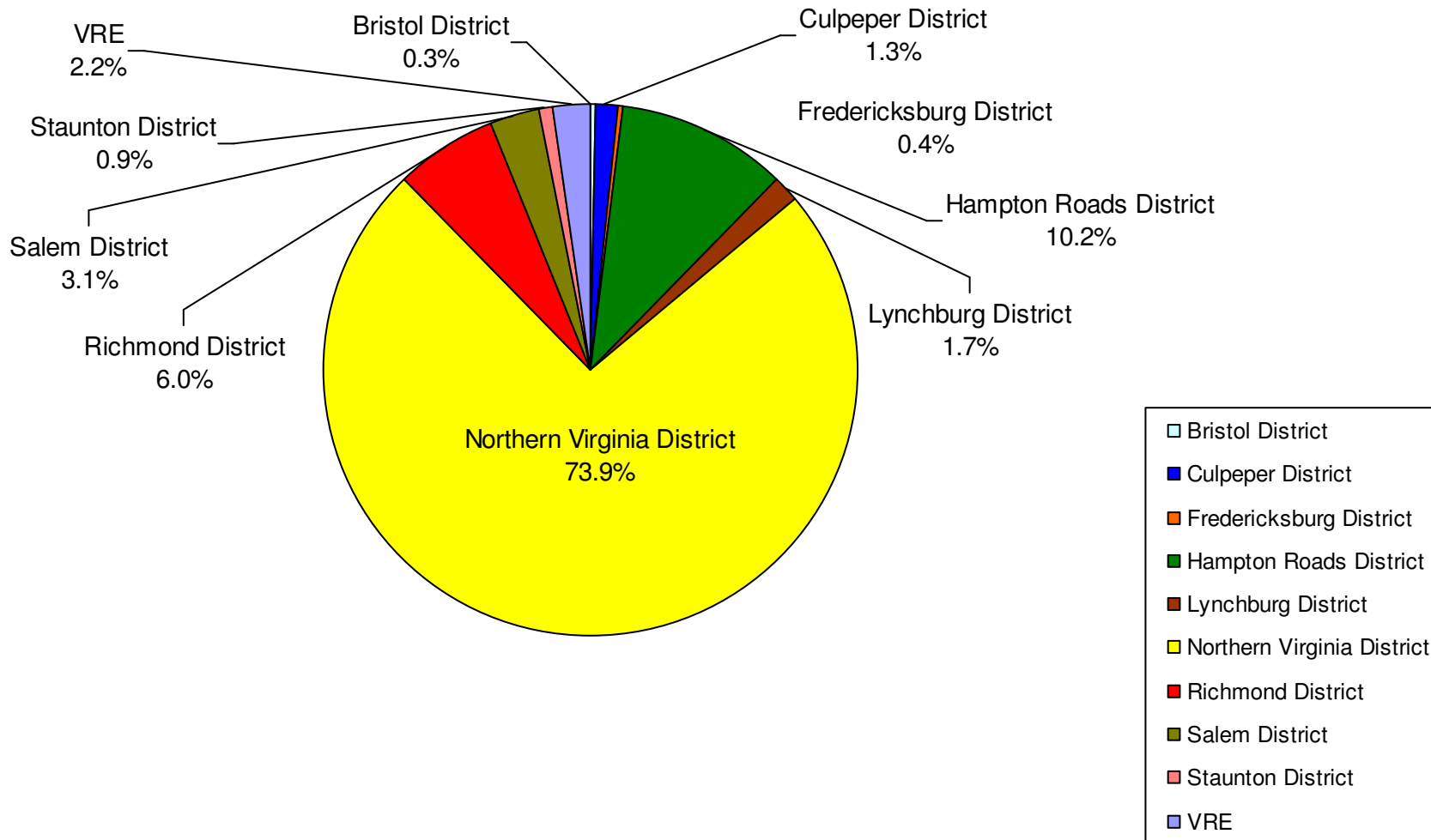
## FY2009-FY2010 Transit Ridership and Fuel Cost Comparison



## FY2010 Transit Ridership and Virginia Unemployment Comparison

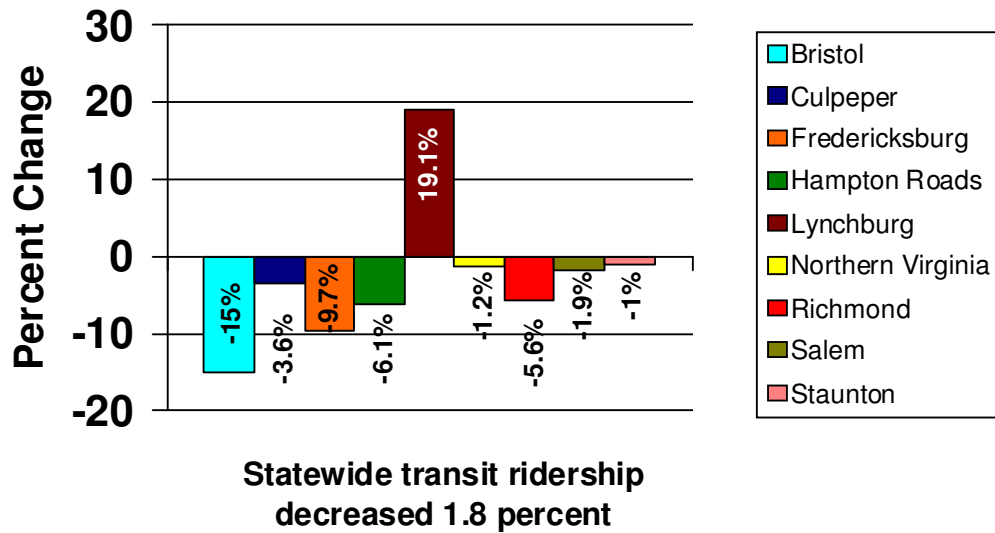


# December 2009 Statewide Transit and Commuter Rail Ridership by District

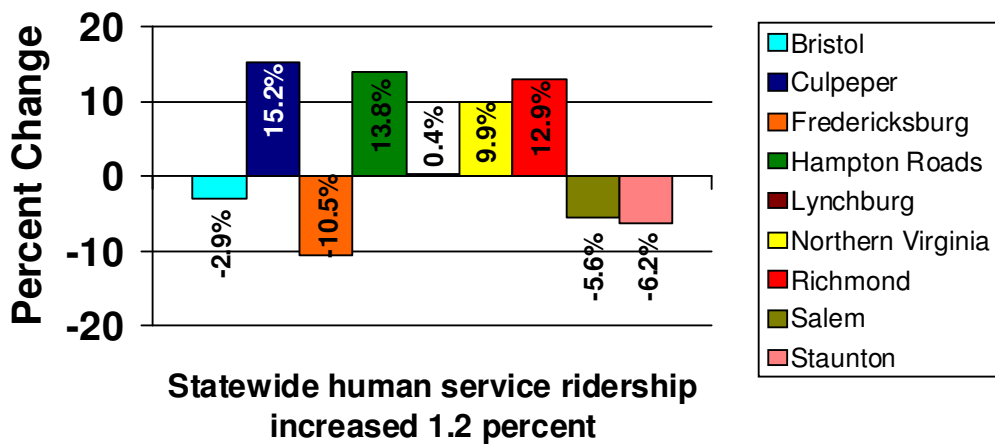


VRE ridership is not included within district totals because the operator provides cross-district service. Percentages may not add to 100 due to rounding.

## December 2009 vs. December 2008 Transit Ridership by District



## December 2009 vs. December 2008 Human Service Ridership by District



## December 2009 Statewide Transit Ridership Report

Operator	Total Ridership December 2009	Total Ridership December 2008	Percent Change	Fiscal YTD 2010 (July 2009 - December 2009)	Fiscal YTD 2009 (July 2008 - December 2008)	Percent Change
<b>Passenger Rail</b>						
Virginia Railway Express	306,319	297,356	3%	1,962,888	1,919,462	2%
<b>Total Passenger Rail Ridership</b>	<b>306,319</b>	<b>297,356</b>	<b>3%</b>	<b>1,962,888</b>	<b>1,919,462</b>	<b>2%</b>
<b>Bristol District</b>						
City of Bristol Virginia	7,010	6,580	7%	40,916	38,726	6%
District Three Public Transit	15,114	15,811	-4%	113,242	116,799	-3%
Four County Transit	10,437	13,594	-23%	74,112	90,259	-18%
Junction Center for Independent Living	223	82	172%	1,534	1,103	39%
Mount Rogers Community Services Board	1,901	2,106	-10%	11,796	12,229	-4%
Mountain Empire Older Citizens, Inc.	3,592	6,028	-40%	28,132	38,796	-27%
Town of Bluefield-Graham Transit	2,335	3,290	-29%	25,383	20,533	24%
<b>Bristol District Total</b>	<b>40,612</b>	<b>47,491</b>	<b>-14%</b>	<b>295,115</b>	<b>318,445</b>	<b>-7%</b>
<b>Culpeper District</b>						
Charlottesville Transit Service	151,891	157,965	-4%	1,126,352	977,731	15%
Greene County Transit, Inc.	4,684	4,896	-4%	26,983	27,025	0%
JAUNT, Inc.	21,893	21,752	1%	148,339	138,519	7%
Rappahannock-Rapidan CSB-AAA	2,516	2,185	15%	22,457	16,812	34%
Virginia Regional Transit - Culpeper County	493	476	4%	3,093	2,611	18%
Virginia Regional Transit - Fauquier/Warrenton	2,546	2,922	-13%	14,704	13,201	11%
Virginia Regional Transit - Town Of Culpeper	4,907	5,387	-9%	33,251	34,603	-4%
Virginia Regional Transit - Town Of Orange	2,022	2,106	-4%	13,435	13,995	-4%
<b>Culpeper District Total</b>	<b>190,952</b>	<b>197,689</b>	<b>-3%</b>	<b>1,388,614</b>	<b>1,224,497</b>	<b>13%</b>

Operator	Total Ridership December 2009	Total Ridership December 2008	Percent Change	Fiscal YTD 2010 (July 2009 - December 2009)	Fiscal YTD 2009 (July 2008 - December 2008)	Percent Change
<b>Fredericksburg District</b>						
Bay Aging	9,762	10,497	-7%	65,882	71,765	-8%
Bay Aging/Colonial Beach Transit	856	1,043	-18%	6,793	6,020	13%
FRED - Caroline County	464	628	-26%	4,206	4,154	1%
FRED - King George	1,203	1,711	-30%	8,691	11,189	-22%
Fredericksburg Regional Transit	37,717	41,476	-9%	251,237	263,067	-4%
Rappahannock Area Community Services Board	9,646	10,772	-10%	78,082	58,663	33%
<b>Fredericksburg District Total</b>	<b>59,648</b>	<b>66,127</b>	<b>-10%</b>	<b>414,891</b>	<b>414,858</b>	<b>0%</b>
<b>Hampton Roads District</b>						
Arc of the Virginia Peninsula, Inc.	1,242	1,248	0%	7,557	8,877	-15%
Bon Secours Senior Health	274	314	-13%	2,016	2,466	-18%
Chesapeake Service Systems	572	296	93%	3,512	2,128	65%
Eastern Shore Community Services Board	2,211	1,964	13%	15,573	15,754	-1%
ESAAA/CAA	894	766	17%	6,602	5,318	24%
Hampton Roads Transit	1,227,986	1,292,636	-5%	8,045,689	8,080,681	0%
Historic Triangle Senior Center	612	791	-23%	3,612	1,876	93%
Peninsula Agency on Aging	1,476	1,498	-1%	9,250	10,628	-13%
Senior Services	4,345	3,140	38%	24,390	15,029	62%
STAR Transit	2,781	2,857	-3%	16,009	18,848	-15%
Sussex-Greenville-Emporia Adult Activity Services, Inc.	1,913	1,740	10%	11,203	11,122	1%
Town of Chincoteague*						
Western Tidewater Community Service Board	522	601	-13%	2,673	5,143	-48%
Williamsburg Area Transit Authority	197,884	226,428	-13%	1,636,200	1,809,199	-10%
<b>Hampton Roads District Total</b>	<b>1,442,712</b>	<b>1,534,279</b>	<b>-6%</b>	<b>9,784,286</b>	<b>9,987,069</b>	<b>-2%</b>

Operator	Total Ridership December 2009	Total Ridership December 2008	Percent Change	Fiscal YTD 2010 (July 2009 - December 2009)	Fiscal YTD 2009 (July 2008 - December 2008)	Percent Change
<b>Lynchburg District</b>						
Blackstone Area Bus / Piedmont Area Transit	803	628	28%	4,803	4,327	11%
Central VA Area Agency on Aging	2,682	2,790	-4%	18,188	18,123	0%
Crossroads Community Services	410	92	346%	2,345	269	772%
Danville City's Parks, Recreation, And Tourism; Stonewall Therapeutic Recreation Center	46	77	-40%	352	419	-16%
Danville Transit System	20,353	21,084	-3%	126,102	133,005	-5%
Danville-Pittsylvania Community Services	50	0	0%	417	0	0%
Farmville Area Bus	7,339	7,756	-5%	63,254	62,729	1%
Greater Lynchburg Transit Company	209,701	169,986	23%	1,524,598	1,604,837	-5%
JAUNT Buckingham	801	1,031	-22%	5,984	5,162	16%
Lake Area Bus / Halifax Area Rural Transit	455	516	-12%	2,715	3,450	-21%
Southside Community Services Board	1,280	1,510	-15%	10,852	12,396	-12%
STEPS, Inc.	1,083	1,051	3%	6,574	7,173	-8%
The Arc of Central Virginia	1	10	-90%	41	59	-31%
<b>Lynchburg District Total</b>	<b>245,004</b>	<b>206,531</b>	<b>19%</b>	<b>1,766,225</b>	<b>1,851,949</b>	<b>-5%</b>
<b>Northern Virginia District</b>						
Alexandria Transit Company - DASH	293,896	314,230	-6%	1,943,812	2,070,069	-6%
Arlington County	155,456	114,166	36%	922,738	729,494	26%
City of Alexandria - King Street Trolley	23,123	39,825	-42%	260,934	411,563	-37%
Fairfax - CUE	69,045	80,943	-15%	478,931	559,538	-14%
ECHO.INC	4,104	3,717	10%	26,693	22,808	17%
Fairfax Connector	731,285	769,602	-5%	4,621,312	5,033,159	-8%
Jewish Community Center of Northern Virginia	152	156	-3%	894	690	30%
Loudoun County Transit	70,711	66,511	6%	462,740	449,309	3%
PRTC	240,527	247,309	-3%	1,612,396	1,643,377	-2%
Virginia Regional Transit - Loudoun	49,943	43,032	16%	337,493	281,723	20%
Virginia Regional Transit - Town Of Purcellville	1,424	1,271	12%	10,835	9,989	8%
WMATA MetroBus	1,486,209	1,767,413	-16%	10,331,536	11,651,700	-11%
WMATA MetroRail	7,341,169	7,139,885	3%	49,378,026	50,449,778	-2%
<b>Northern Virginia District Total</b>	<b>10,467,044</b>	<b>10,588,060</b>	<b>-1%</b>	<b>70,388,340</b>	<b>73,313,197</b>	<b>-4%</b>

Operator	Total Ridership December 2009	Total Ridership December 2008	Percent Change	Fiscal YTD 2010 (July 2009 - December 2009)	Fiscal YTD 2009 (July 2008 - December 2008)	Percent Change
<b>Richmond District</b>						
A Grace Place Adult Care Center	504	444	14%	3,195	2,786	15%
American Red Cross - Richmond	720	654	10%	4,636	4,638	0%
Bay Aging/New Kent/Charles City	954	922	3%	6,721	6,115	10%
Beth Sholom Home	465	308	51%	2,497	1,772	41%
Blackstone Area Bus	1,799	2,064	-13%	10,518	11,052	-5%
Blackstone Area Bus / Dinwiddie County	408	0	0%	2,064	0	0%
Blackstone Area Bus / Town & County Transit	375	316	19%	4,218	1,816	132%
Blackstone Area Bus- Brunswick Express	320	275	16%	2,056	1,991	3%
CAPUP	595	241	147%	3,308	922	259%
Chesterfield Community Services Board	1,317	1,667	-21%	8,307	9,733	-15%
Crater District Area Agency On Aging /FGP	2,614	3,127	-16%	25,257	21,554	17%
Daily Planet	29	26	12%	256	115	123%
ElderHomes Corporation	274	148	85%	1,214	974	25%
Goochland Free Clinic And Family Services	86	76	13%	1,326	1,376	-4%
Greater Richmond Transit Company	785,004	833,475	-6%	5,133,919	5,421,244	-5%
Henrico Area Mh/Mr Services	9	0	0%	93	0	0%
Lake Country Area Agency on Aging	1,264	430	194%	9,320	7,669	22%
Petersburg Area Transit	47,481	49,304	-4%	289,881	310,087	-7%
St. Joseph's Villa	1,182	226	423%	10,628	1,188	795%
Weinstein Jewish Community Center	110	82	34%	879	754	17%
<b>Richmond District Total</b>	<b>845,510</b>	<b>893,785</b>	<b>-5%</b>	<b>5,520,293</b>	<b>5,805,786</b>	<b>-5%</b>
<b>Salem District</b>						
Blacksburg Transit	217,901	215,678	1%	1,822,982	1,601,042	14%
Goodwill Industries Of The Valleys	274	0	0%	2,115	461	359%
Greater Roanoke Transit Company	200,822	214,167	-6%	1,236,691	1,333,996	-7%
New River Valley Community Services	1,781	1,970	-10%	11,866	11,947	-1%
Piedmont Community Services	564	521	8%	3,451	3,262	6%
Pulaski Area Transit	7,425	7,070	5%	46,570	30,863	51%
RADAR / Martinsville / Henry County (in progress)	892	n/a	n/a	3,736	n/a	n/a
RADAR / Roanoke	3,674	2,021	82%	18,837	9,063	108%
Southern Area Agency on Aging	3,385	3,844	-12%	25,472	26,898	-5%
Stepping Stones	32	56	-43%	226	320	-29%
<b>Salem District Total</b>	<b>436,750</b>	<b>445,327</b>	<b>-2%</b>	<b>3,171,946</b>	<b>3,017,852</b>	<b>5%</b>

Operator	Total Ridership December 2009	Total Ridership December 2008	Percent Change	Fiscal YTD 2010 (July 2009 - December 2009)	Fiscal YTD 2009 (July 2008 - December 2008)	Percent Change
<b>Staunton District</b>						
City of Winchester	9,064	9,715	-7%	61,373	72,593	-15%
Friendship Industries, Inc.	789	772	2%	5,156	5,890	-12%
Grafton, Inc.	1,187	1,201	-1%	9,407	9,410	0%
Harrisonburg Transit	82,472	82,190	0%	937,227	863,677	9%
Northwestern Community Services	936	948	-1%	6,549	5,864	12%
Pleasant View	5,216	6,178	-16%	32,299	31,289	3%
RADAR / Covington & Clifton Forge	957	1,007	-5%	6,576	7,103	
Rockbridge Area CSB	920	890	3%	5,530	5,622	-2%
Rockbridge Area Occupational Center, Inc.	444	532	-17%	2,403	3,783	-36%
Rockbridge Area Transportation System Inc.	710	838	-15%	5,015	4,922	2%
Shen-Paco Industries, Inc.	80	108	-26%	500	738	-32%
Shenandoah Area Agency on Aging, Inc.	2,088	1,830	14%	16,678	13,524	23%
The Arc of Harrisonburg/Rockingham	486	565	-14%	3,529	3,470	2%
Valley Program for Aging Services	2,372	2,376	0%	15,838	15,099	5%
Virginia Regional Transit - CATS Coordinated Area Transportation	4,820	4,050	19%	30,804	22,996	34%
Virginia Regional Transit - City Of Staunton	5,634	7,540	-25%	48,479	54,775	-11%
Virginia Regional Transit - Clarke County	166	244	-32%	995	1,063	-6%
Virginia Regional Transit - Page County	477	655	-27%	3,141	4,147	-24%
Virginia Regional Transit - Shenandoah Blue Ridge Service	3,463	2,468	40%	27,928	23,216	20%
Virginia Regional Transit - Town Of Front Royal	1,023	985	4%	6,582	6,277	5%
<b>Staunton District Total</b>	<b>123,304</b>	<b>125,092</b>	<b>-1%</b>	<b>1,226,009</b>	<b>1,155,458</b>	<b>6%</b>
<b>STATEWIDE TRANSIT &amp; COMMUTER RAIL RIDERSHIP</b>						
	<b>14,157,855</b>	<b>14,401,737</b>	<b>-2%</b>	<b>95,918,607</b>	<b>99,008,573</b>	<b>-3%</b>

	December 2009	December 2008	Percent Change	Fiscal YTD 2010 (July 2009 - December 2009)	Fiscal YTD 2009 (July 2008 - December 2008)	Percent Change
<b>CALENDAR COMPARISON</b>						
Number of Weekdays	21	19	10.5%	123	121	1.7%
Number of Saturday and Sundays	8	8	0.0%	52	52	0.0%
Number of Holidays	2	3	-33.3%	7	8	-12.5%

	December 2009	December 2008	Percent Change	Fiscal YTD 2010 (July 2009 - December 2009)	Fiscal YTD 2009 (July 2008 - December 2008)	Percent Change
<b>COMMUTER RAIL ON-TIME PERFORMANCE</b>						
Virginia Railway Express	89.1%	86.5%	2.6%	89.0%	86.2%	2.8%

\*Town of Chincoteague service is seasonal and will resume in Spring 2010.