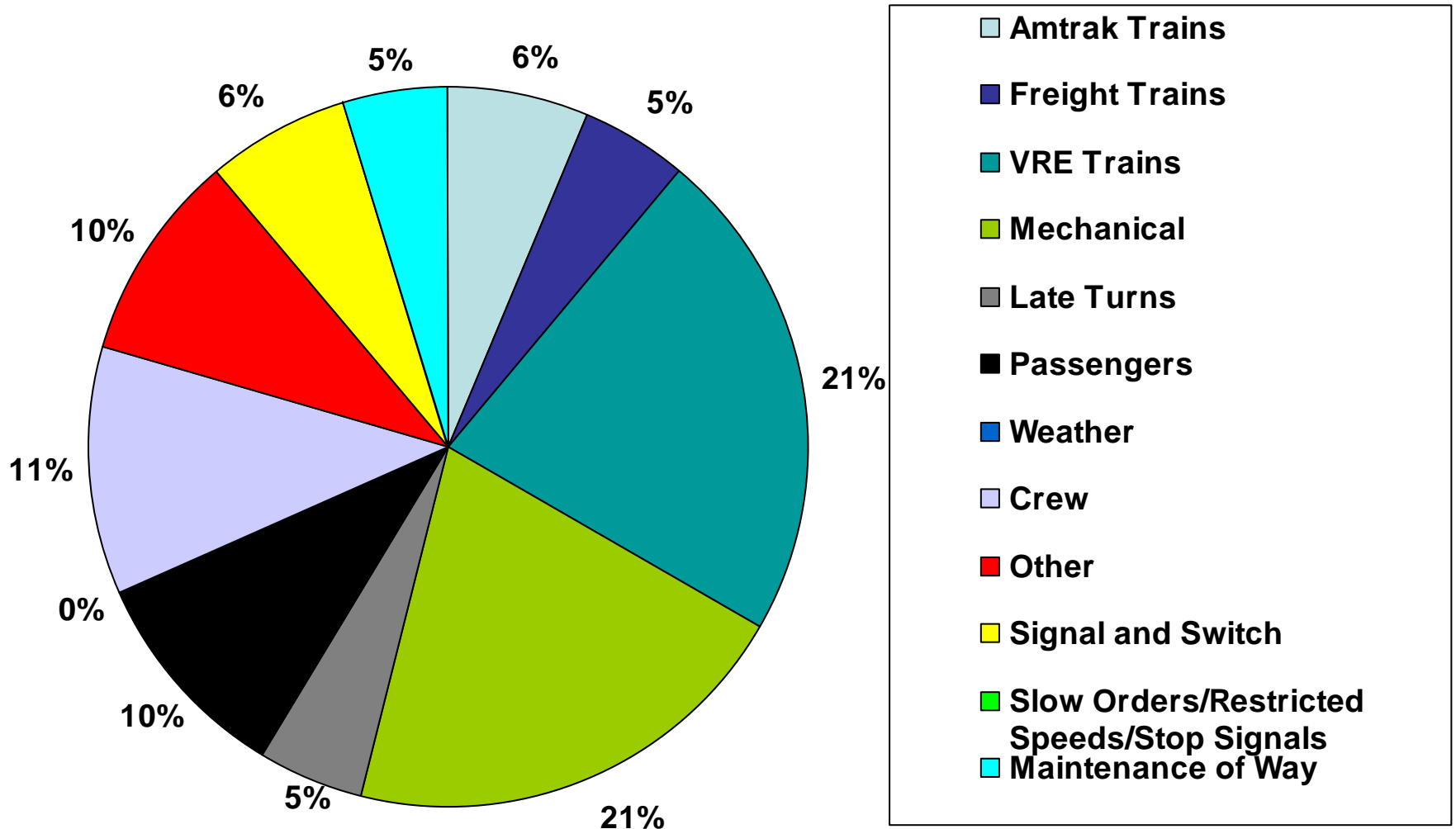
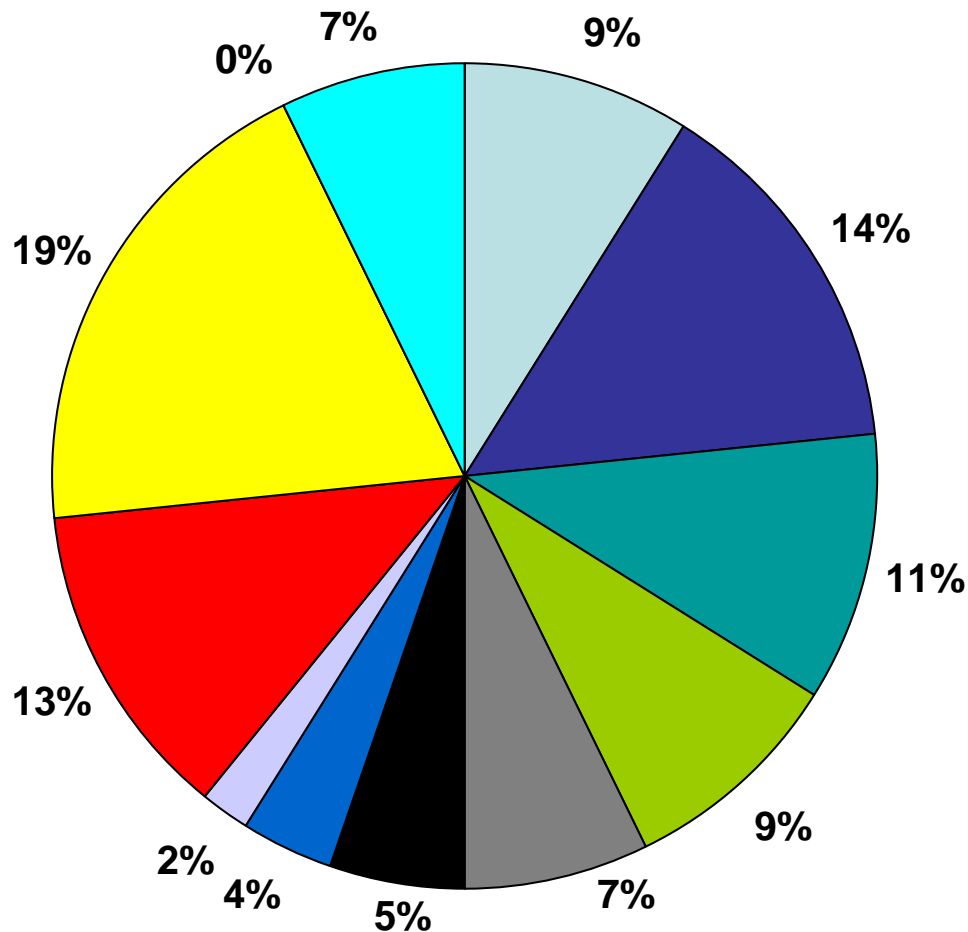


# Causes of Delays October 2007

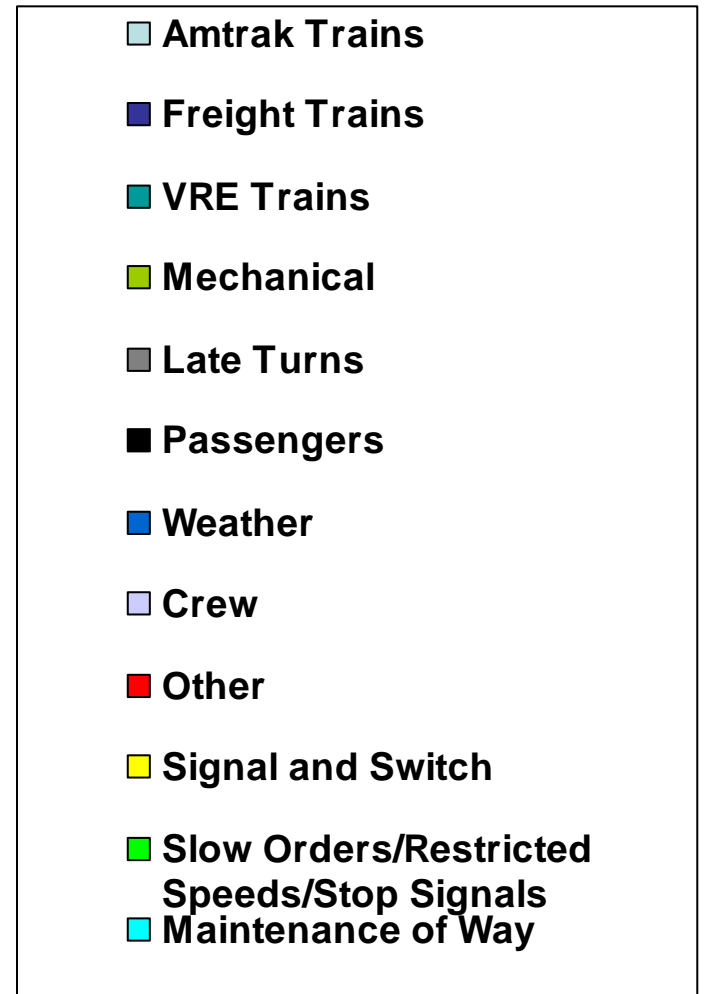
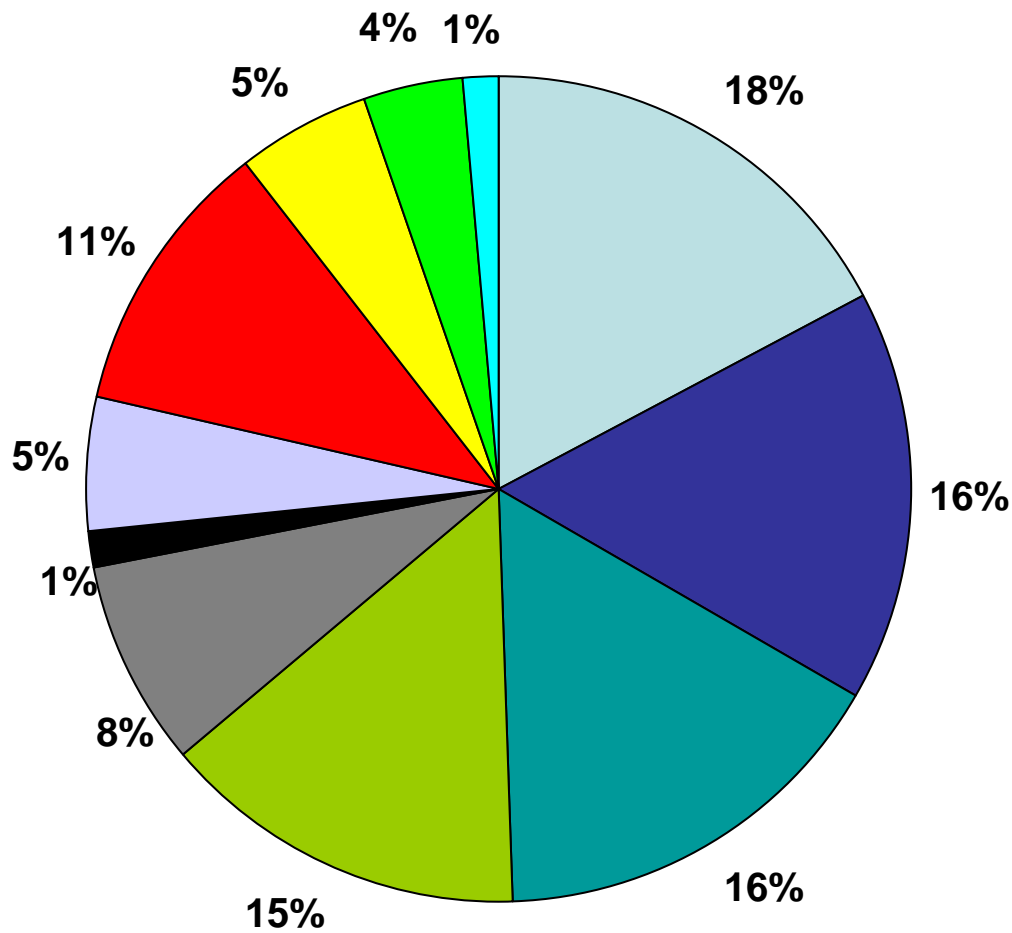


# Causes of Delays November 2007

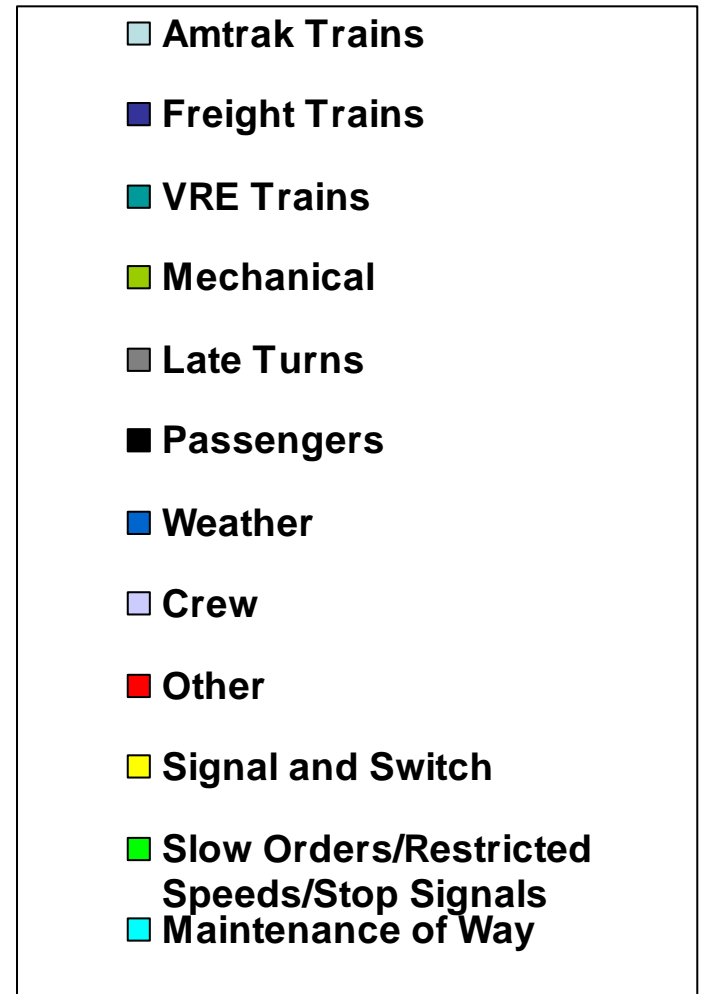
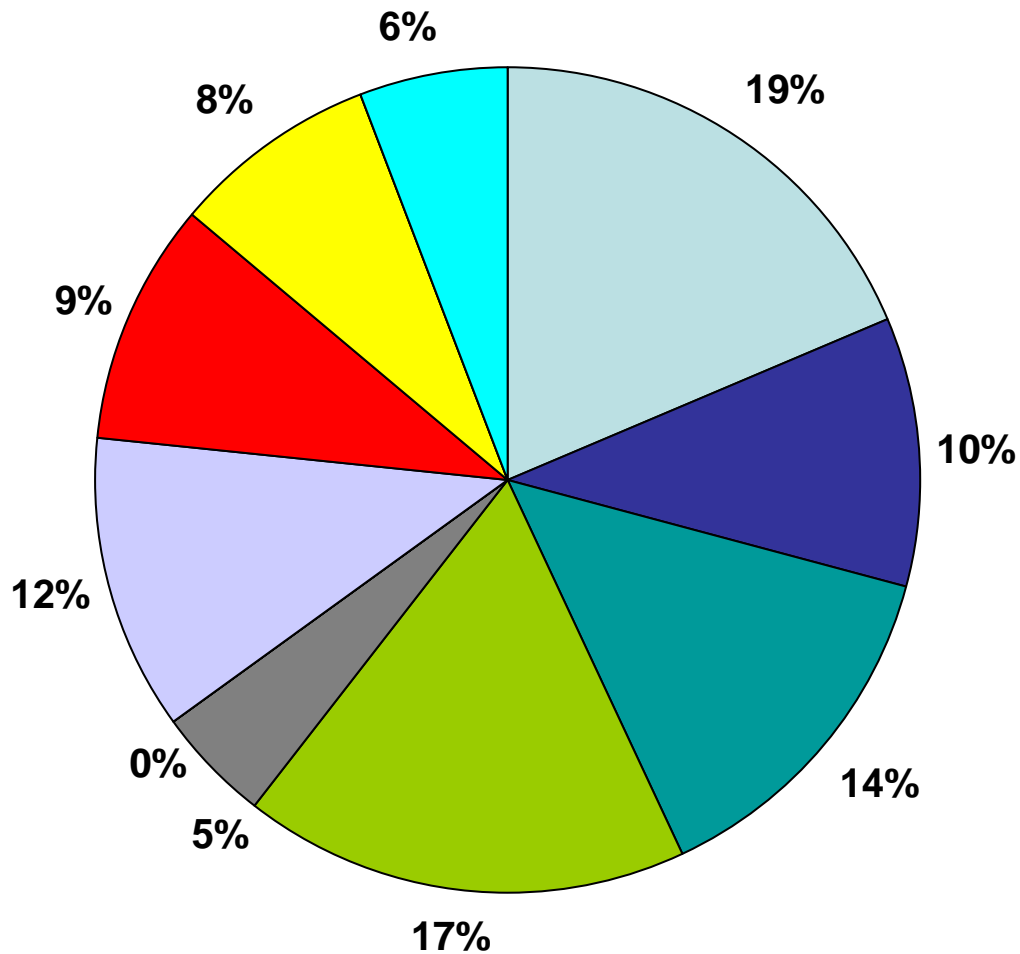


- Amtrak Trains
- Freight Trains
- VRE Trains
- Mechanical
- Late Turns
- Passengers
- Weather
- Crew
- Other
- Signal and Switch
- Slow Orders/Restricted Speeds/Stop Signals
- Maintenance of Way

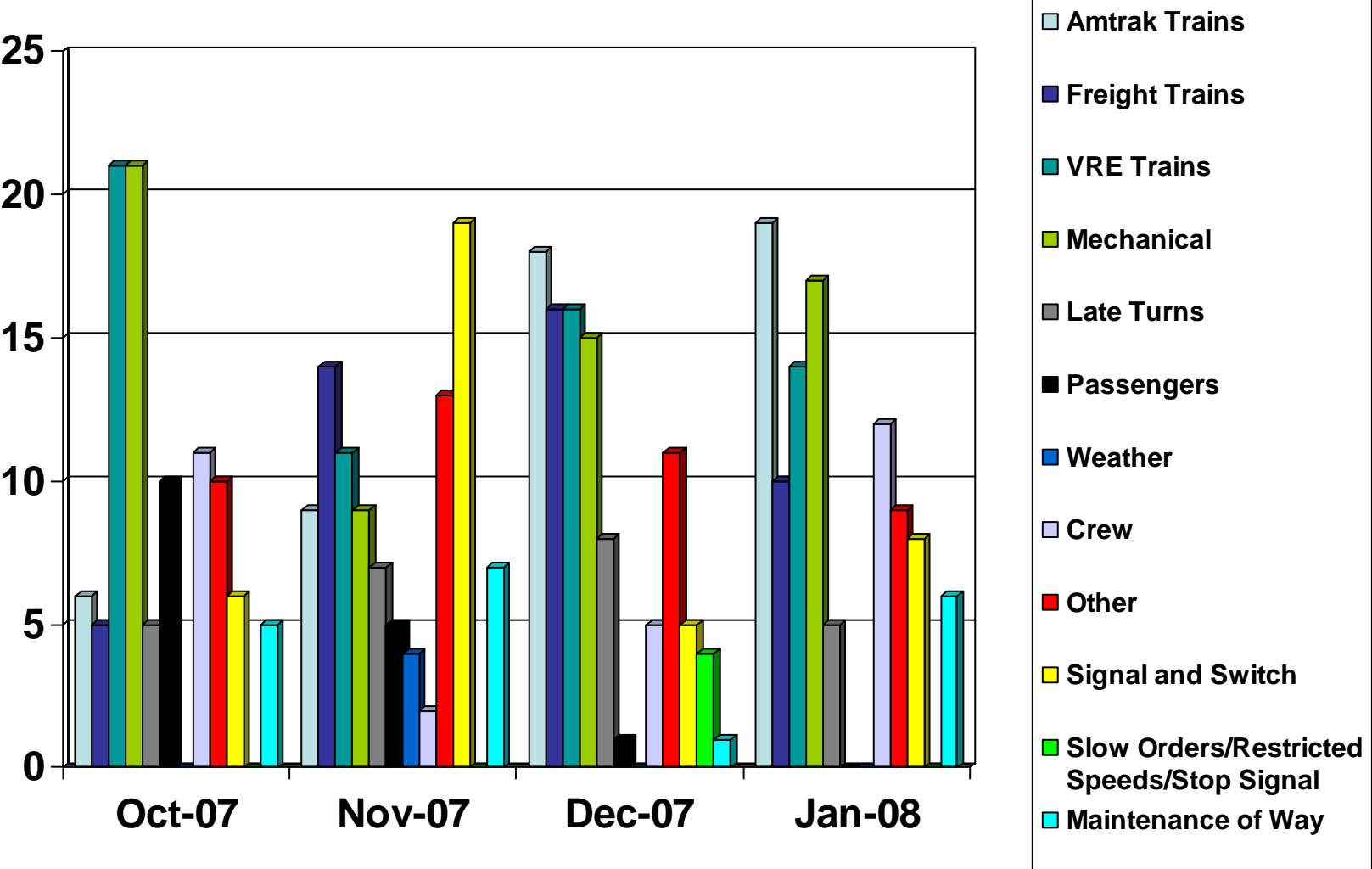
# Causes of Delays December 2007



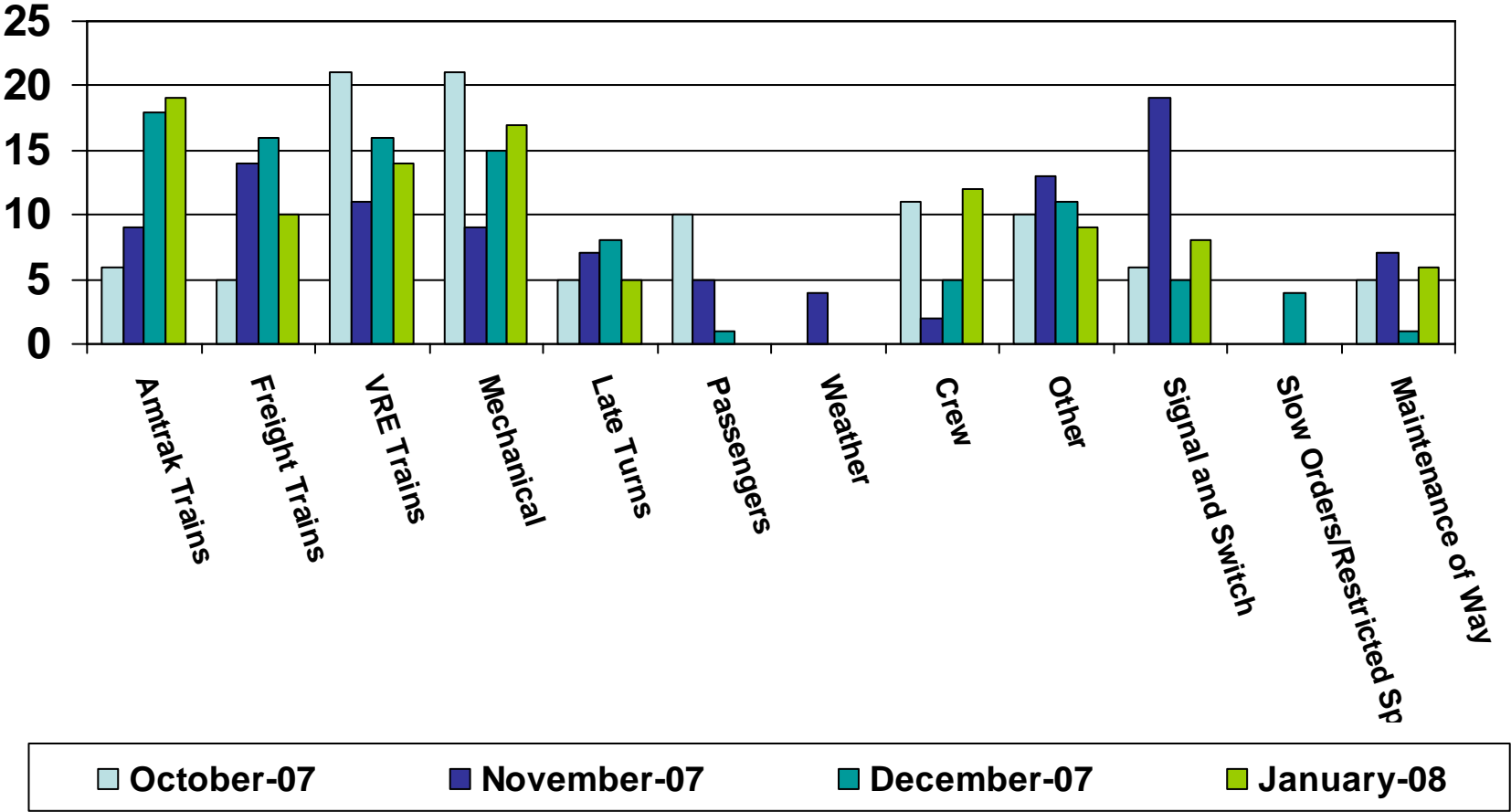
# Causes of Delays January 2008



# Percentage of Delays by Month



# Percentage of Delays by Type and Month



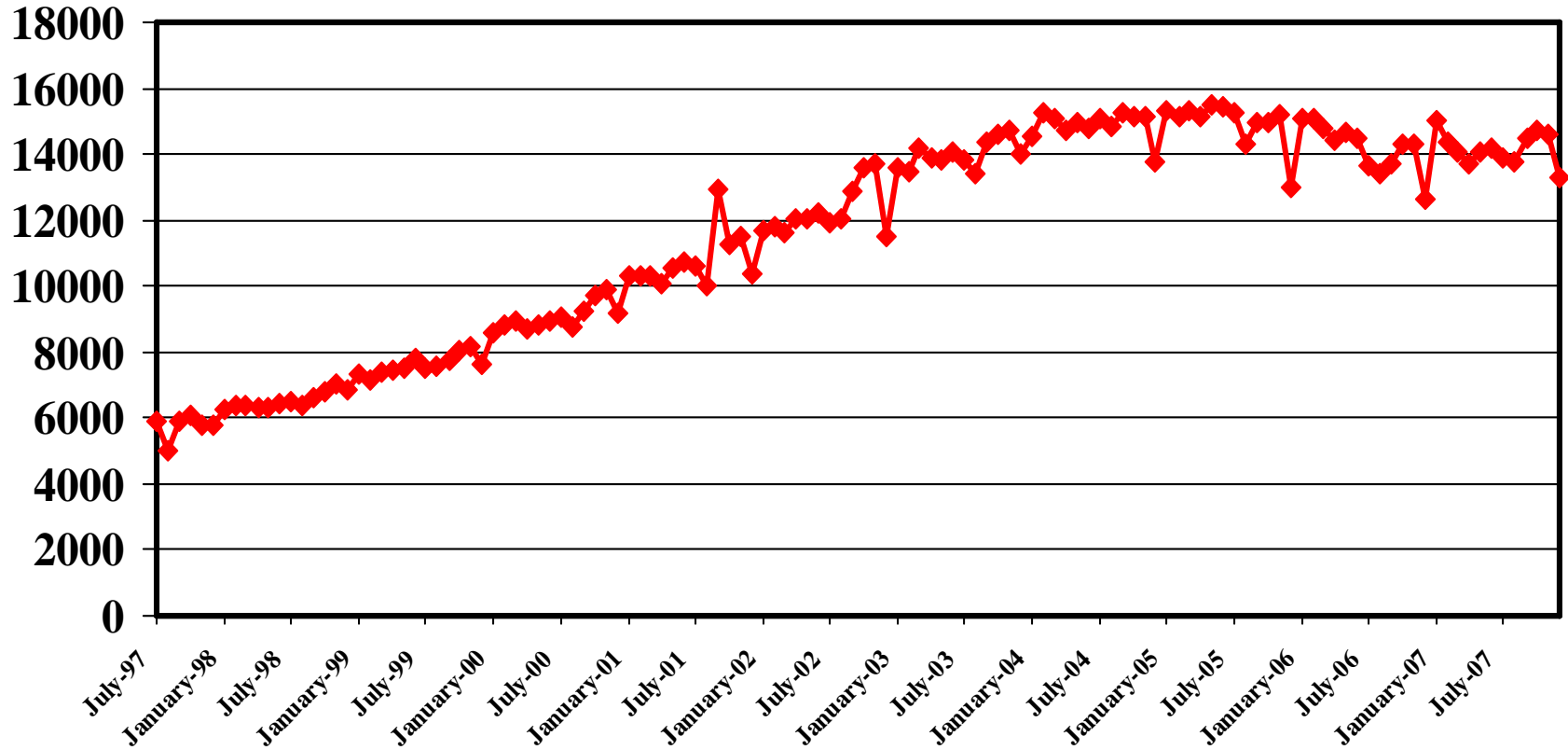
# Percentage of Delay by Responsibility

## October Through January 2008

	Total Number of Delays	% of Delays
<b>VRE</b> <i>VRE Train Interference, Mechanical Problems and Late Turns</i>	<b>105</b>	<b>38%</b>
<b>Amtrak</b> <i>Amtrak Train Interference Crew-Related Issues</i>	<b>60</b>	<b>21%</b>
<b>Railroads</b> <i>Freight Train Interference, Switch/Signal Problems, Slow Orders/Restricted Speeds/Stop Signals, Maintenance of Way</i>	<b>74</b>	<b>26%</b>
<b>Other</b> <i>Weather, Passengers, Other</i>	<b>41</b>	<b>15%</b>
<b>Total Delays</b>	<b>280</b>	<b>100%</b>

# VRE Ridership

*(July 1997 – December 2007)*



# Cumulative Ridership FY2007 v. FY2008

	MANASSAS			FREDERICKSBURG				
Current Month	Avg Daily FY2007	Avg Daily FY2008	% change	Avg Daily FY2007	Avg Daily FY2008	% change	Current Total	% change
July	126,200	136,780	8.4%	146,734	155,263	5.8%	292,043	7.0%
August	271,532	284,100	4.6%	309,343	324,978	5.1%	609,078	4.9%
September	400,557	414,190	3.4%	453,976	470,364	3.6%	884,554	3.5%
October	543,774	567,590	4.4%	611,752	640,958	4.8%	1,208,548	4.6%
November	670,971	698,585	4.1%	756,639	787,388	4.1%	1,485,973	4.1%
December	787,433	810,413	2.9%	892,897	920,628	3.1%	1,731,041	3.0%
January	932,274			1,052,231			0	
February	1,059,119			1,188,514			0	
March	1,209,634			1,347,309			0	
April	1,345,432			1,499,738			0	
May	1,490,627			1,664,589			0	
June	1,630,221			1,823,340			0	

Average growth

4.6%

4.4%

4.5%

\*Ridership figures are shown in passenger trips. Includes Amtrak cross honor train riders.