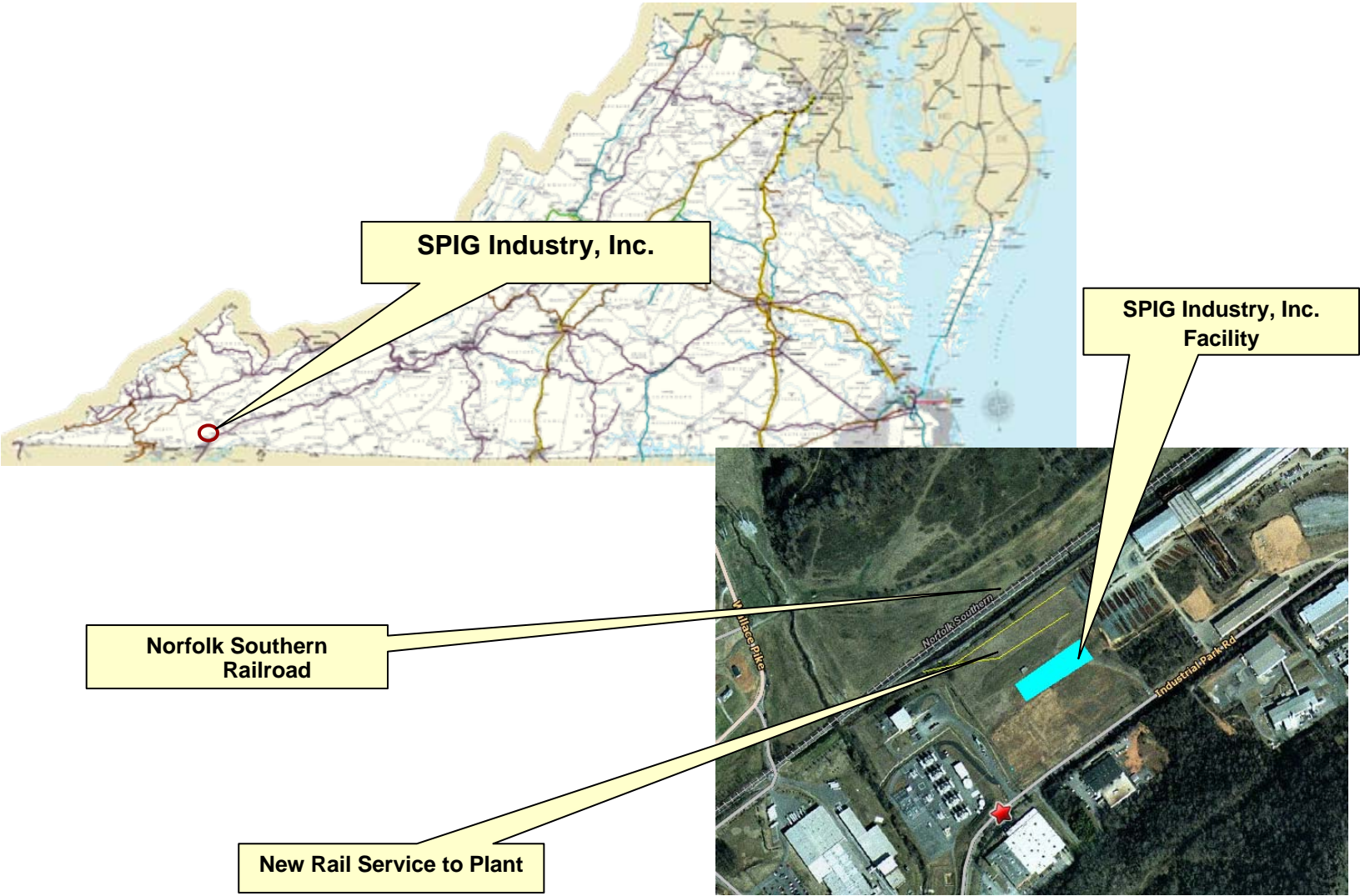


Rail Industrial Access Program Application Briefing

SPIG Industry, Inc. Washington County

**Kevin B. Page
Chief of Rail Transportation**

Project Location



June 17, 2009

Project Description

- ❑ SPIG Industry, Inc. specializes in the production of high quality steel guardrail beams and posts.
- ❑ Construction of 1,800 feet of rail with one in-plant switch to support the facility.
- ❑ Project cost: \$210,000
- ❑ Project has the support of the Virginia Economic Development Partnership and Washington County.
- ❑ Rail service to be provided by Norfolk Southern Railroad.

Project Benefits

- ❑ Local capital investment of \$5 million, and creation of 25 new jobs within two years.
- ❑ Rail access will enable 400 – 500 annual railcar shipments per year

Project Scoring

- ❑ Projects are scored based the following criteria:
 - Number of annual carloads
 - Added employment
 - Commonwealth’s portion of track construction per initial capital investment cost
 - Jurisdictional unemployment rate as compared to statewide
 - Project endorsement by the Virginia Economic Development Partnership or Department of Business Assistance to bring or expand industry in Virginia
 - Non-state contributions to track construction
 - Contribution to the long term viability of a rail line
- ❑ This project scored “Fair” at 61 out of 100 points.

Recommended Project Funding

Applicant	Total Project Cost	Recommended CTB Allocation
SPIG Industry, Inc.	\$210,000	\$150,000

The Rail Industrial Access program specifies that no more than \$300,000 of unmatched funds may be allocated to any one project in any fiscal year. Rail Industrial Access funds in excess of \$300,000 are matched dollar-for-dollar by the grantee or from other non-program sources.

DRPT will present this project for action at the July 2009 CTB meeting.



Virginia Department of Rail and Public Transportation

The Smartest Distance Between Two Points

www.drpt.virginia.gov

info@drpt.virginia.gov

804-786-4440