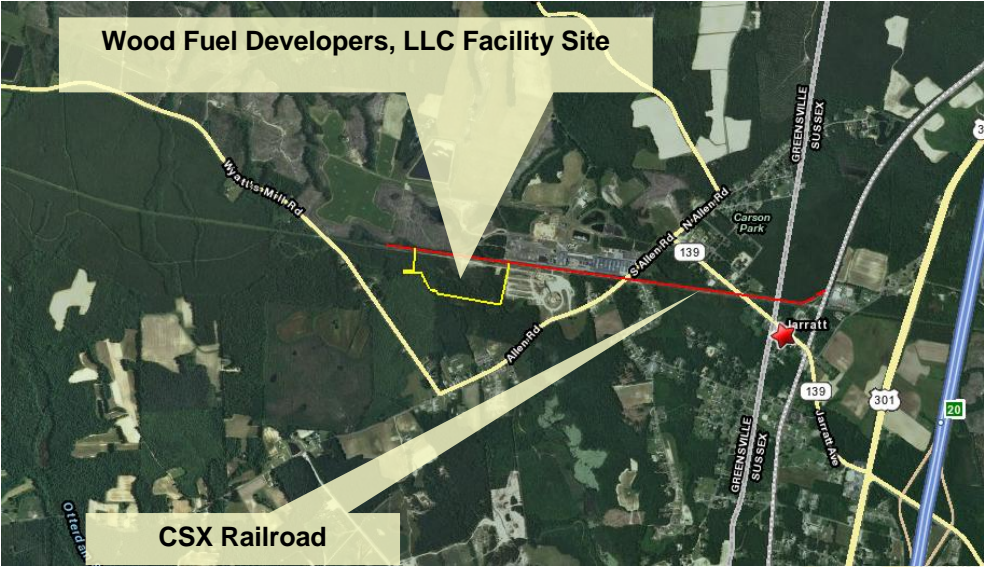


Rail Industrial Access Program Application Briefing

Wood Fuel Developers, LLC

Kevin B. Page
Chief of Rail Transportation

Project Location



Project Description

- ❑ **Wood Fuel Developers, LLC is developing a facility to manufacture and ship wood fuel pellets to serve residential heating systems throughout the United States**
- ❑ **Project cost: \$617,800; \$450,000 recommended**
- ❑ **Project has the support of the Virginia Economic Development Partnership and Board of Supervisors of Greensville County**
- ❑ **Rail service to be provided by CSX Railroad**
- ❑ **Local capital investment of \$18.7 million, and creation of 39 new jobs**
- ❑ **Rail access will enable approximately 400 carloads shipments (680 truck loads) per year**

Project Evaluation

- ❑ Projects are evaluated based on the following criteria:
 - Number of annual carloads
 - Employment
 - Commonwealth's portion of track construction per initial capital investment cost
 - Jurisdictional unemployment rate compared to statewide
 - Project endorsement by the Virginia Economic Development Partnership or Department of Business Assistance to bring or expand industry in Virginia
 - Non-state contributions to track construction
 - Contribution to the long term viability of a rail line
- ❑ This project is recommended for funding.

Recommended Project Funding

| Applicant | Total Project Cost | Recommended CTB Allocation | Local Match (Minimum) |
|----------------------------------|---------------------------|-----------------------------------|------------------------------|
| Wood Fuel Developers, LLC | \$617,800 | \$450,000 | \$150,000 |

The Rail Industrial Access program specifies that no more than \$300,000 of unmatched funds may be allocated to any one project in any fiscal year. Rail Industrial Access funds in excess of \$300,000 are matched dollar-for-dollar by the grantee or from other non-program sources.

DRPT requests approval at this CTB meeting.



www.drpt.virginia.gov

drptpr@drpt.virginia.gov

804-786-4440